

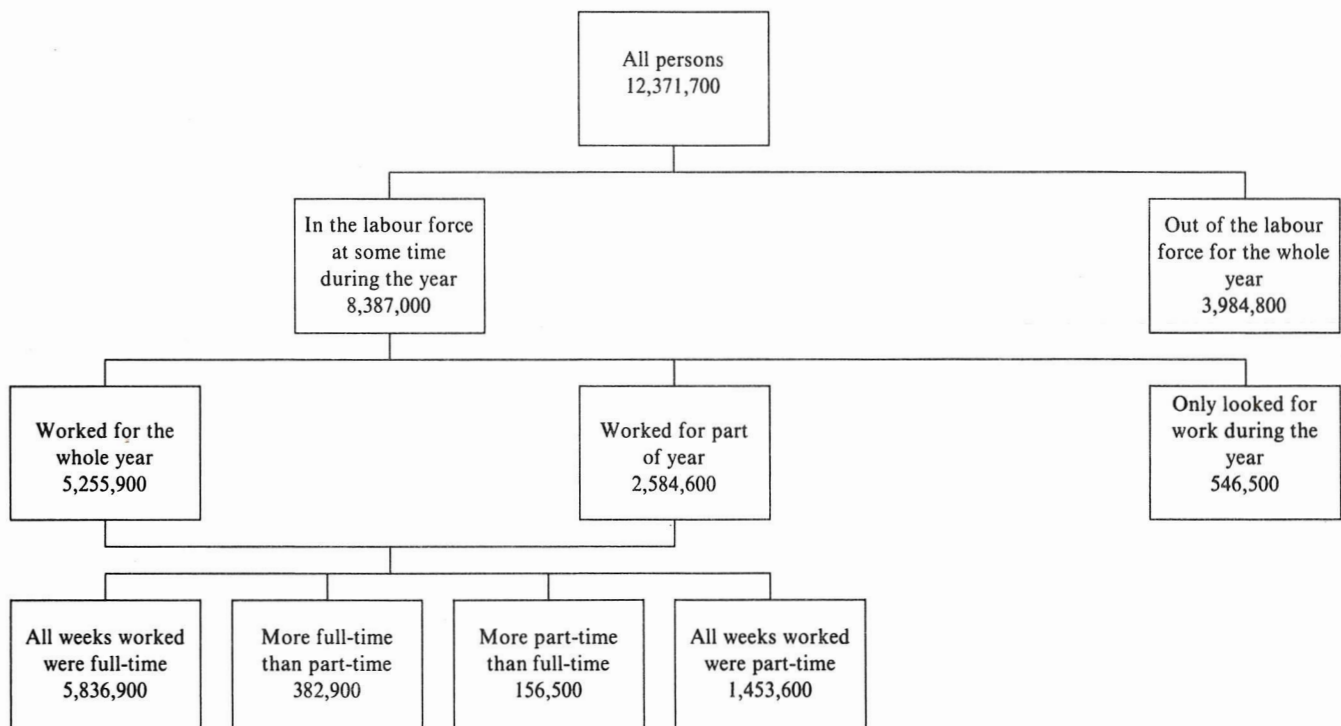


LABOUR FORCE EXPERIENCE, AUSTRALIA, DURING THE YEAR ENDING FEBRUARY 1987, SUMMARY (Previously: Labour Force Experience, Australia, during the year ending February, Preliminary)

- PHONE INQUIRIES** • *about these statistics*—contact Ms Sandra Martyn on Canberra (062) 52 6503 or any ABS State office.
 • *about other statistics and ABS services*—contact **Information Services** on Canberra (062) 52 6007, 52 6627, 52 5402 or any ABS State office.
- MAIL INQUIRIES** • *write to Information Services*, ABS, P.O. Box 10, Belconnen, A.C.T. 2616 or any ABS State office.
- ELECTRONIC SERVICES** • on **VIATEL** — key *656#. • on **AUSSTATS** — phone (062) 52 6017.
 • on **TELESTATS** — phone (062) 52 5404.

MAIN FEATURES

DIAGRAM 1. ALL PERSONS : LABOUR FORCE EXPERIENCE DURING THE YEAR ENDING FEBRUARY 1987
(Source of data: Table 2)



Of the estimated 12,371,700 persons aged 15 and over at February 1987, 8,387,000 (67.8 per cent) had been in the labour force at some time during the previous twelve months. The majority of these persons (6,083,000) had been in the labour force for the whole period, while a further 17.0 per cent had been in the labour force for at least 6 months of the year.

More than 3 in every 5 persons (63.4 per cent) had worked during the twelve months ending February 1987, with males having a higher proportion than females (75.6 per cent and 51.5 per cent respectively). While solely full-time employment remained the most popular form of work (47.2 per cent of all persons), the proportion of persons who worked only part-time during the year was 11.7 per

cent, compared with the February 1977 figure of 9.2 per cent.

Although 1,629,000 persons looked for work at some time during the year, almost two-thirds of these (66.5 per cent) had also worked at some time during the year. Close to 4 out of every 5 persons who had looked for work had done so in one spell whose average duration was 19.4 weeks.

6,288,700 persons were out of the labour force at some time during the twelve months, with 3,984,800 (63.4 per cent) out of the labour force for the whole period. 69.2 per cent of those persons without any labour force experience were female.

EXPLANATORY NOTES

Introduction

The monthly population survey (which is described in *The Labour Force, Australia* (6203.0)) comprises the monthly labour force survey and supplementary topics. This publication contains some results of a supplementary survey run in association with the February 1987 labour force survey conducted throughout Australia.

2. Of the respondents to the labour force survey, those who fell within the scope of the supplementary survey were asked additional questions. This subset of respondents was asked the length of time they worked, looked for work or were not in the labour force, the number of spells during which they looked for work and other aspects of labour force experience.

Scope

3. The scope of this supplementary survey was the same as that used for the labour force survey (described in full in *The Labour Force, Australia* (6203.0)) except that it excluded visitors to private dwellings, students boarding at school, some patients in hospitals and sanatoriums and inmates of gaols, reformatories etc.

4. In the tables, "All Persons", refers to all persons within the scope of the survey.

Coverage

5. In the population survey, coverage rules are applied which aim to ensure that each person is associated with only one dwelling, and hence has only one chance of selection. See *The Labour Force, Australia* (6203.0) for more details.

Definitions

6. It is impracticable to obtain information relating to a whole year which is strictly comparable with that obtained in the monthly labour force survey for which the reference period is one week. The definitions used in determining the labour force status of persons in the monthly survey depend on a detailed set of questions asked about a person's labour force activity during the reference period. For the survey of labour force experience, a person is assigned to a labour force category for each of the weeks in the year on the basis of a more limited set of questions. It is for this reason that the terms *worked* and *looked for work* are used in this survey rather than the rigidly defined terms *employed* and *unemployed* used in the monthly labour force survey.

7. Persons in the *labour force* are those persons who, *for those weeks*, reported having either worked or looked for work as defined in paragraphs 8 and 9.

8. Persons who *worked* are those persons who, *for those weeks*, reported having either worked or been on paid leave. Periods of one week or more on strike or time off without pay are not classified as work.

9. Persons who *looked for work* are those persons who, *for those weeks*, reported having been out of work and looking for a job. *Time spent looking for work during the year* is the total number of weeks persons reported that they were out of work and looking for a job, including the weeks in the current period.

10. The *number of spells of looking for work* during the year is the number of different periods, including the current period, during which persons reported that they were out of work and looking for a job.

11. Persons *out of the labour force* are those who, *during any week*, neither worked nor looked for work as defined in paragraphs 8 and 9.

12. For the purposes of the survey, a *job* is defined as:

- (a) employment as a wage or salary earner (or unpaid family helper) by a particular employer, in a particular locality; or
- (b) self-employment (with or without employees) in a particular locality.

13. *Locality*. In capital cities and major towns each suburb is considered to be a different locality.

14. Further definitions of labour force and demographic classifications appearing in this publication are given in *The Labour Force, Australia* (6203.0).

15. Unless otherwise stated, all characteristics referenced in this publication relate to the week before the interview.

Results of the survey

16. The estimates relate to persons covered by the survey in February 1987. Because of emigration, deaths, etc. not all persons with labour force experience during the period were covered. Labour force experience may relate to experience outside Australia.

17. This publication contains only a summary of the results of the survey. A more detailed publication, *Labour Force Experience, Australia* (6206.0), will be released as soon as possible and further information is available on request.

18. Results of similar surveys, the first conducted in February 1969, have been published in *Labour Force Experience, Australia* (6206.0).

19. It is proposed that this survey will be conducted next in February 1988.

Discontinuities in the series

20. The estimates for surveys held from February 1983 are not strictly comparable with those obtained from previous surveys. The reference period for the February 1980 and prior surveys was the previous calendar year (e.g. 1 January to 31 December 1979). The reference period for the February 1981 and 1982 surveys was from the

beginning of the previous February to the end of the week prior to interview. As interviews were conducted over the second and third week of February, the reference period could have extended to 54 weeks. From the February 1983 survey onwards the reference period has been the 52 weeks up to the end of the week prior to interview. Due to the change in the reference period timing, some estimates, particularly those for groups who enter the labour force during the earlier months of the year (e.g. 15 to 19 year olds), will also be affected from the February 1981 survey onwards.

21. In the February 1981 survey, persons who answered that they had been in their current job for a year or longer but who also reported having actually worked for less than the whole period were not counted as out of the labour force for the remainder of the period. In all other years these persons were counted as out of the labour force for that time. In consequence, the February 1981 estimate of persons out of the labour force during all or part of the period is 512,300 persons (249,100 males and 263,200 females) less than that which would have been obtained with the procedures used in other years.

22. Estimates contained in this publication are based on a revised labour force questionnaire introduced in April 1986. The definition of employment was expanded, resulting in small decreases in the estimates of unemployed persons and persons not in the labour force. Further information is contained in *The Labour Force, Australia* (6203.0) and in an information paper *Questionnaires used in the Labour Force Survey* (6232.0).

23. Classification of occupation according to the Australian Standard Classification of Occupations (ASCO) 1986 was introduced in the August 1986 labour force survey, replacing the Classification and Classified List of Occupations (CCLO) used in previous surveys. The main difference between these classifications is that ASCO occupations are classified on the basis of the level and specialisation of skill required for the satisfactory performance of primary tasks. For a more detailed explanation of ASCO see the appendix to *The Labour Force, Australia, August 1986* (6203.0).

24. To provide a link between the two classifications, a matrix has been produced and is shown in Table 41 of *The Labour Force, Australia, August 1986* (6203.0). It shows the relationship between ASCO and CCLO at the broadest classification level (the Major Group). The estimates in the matrix are based on a sub-sample of respondents to the May 1986 labour force survey.

Reliability of the estimates

25. Estimates in this publication are subject to two sources of error:

- (a) *sampling error*: since the estimates are based on information obtained from occupants of a sample of dwellings they may differ from those that would have been produced if all dwellings had been included in the survey. One measure of the likely difference is given by the *standard error*. A table of estimated standard errors for various estimates of level for this survey follows these notes. More information about this topic (including methods of calculating approximate standard errors for *percentages* and *differences*) may be found in *Labour Force Experience, Australia* (6206.0); and
- (b) *non-sampling error*: inaccuracies may occur because of imperfections in reporting by interviewers and respondents and errors made in coding and processing data. These inaccuracies may occur in any enumeration, whether it be a full count or a sample. Every effort is made to reduce the non-sampling error to a minimum by careful design of questionnaires, intensive training and supervision of interviewers and efficient operating procedures.

Related publications

26. Other ABS publications which may be of interest include:

The Labour Force, Australia (6203.0) — issued monthly

Persons Not in the Labour Force, Australia (6220.0) — issued twice-yearly

Job Search Experience of Unemployed Persons, Australia, June 1986 (6222.0) — issued two-yearly

Labour Mobility, Australia (6209.0) — issued annually

Persons who had Re-entered the Labour Force, Australia, May 1985 (6264.0) — issued irregularly

27. Current publications produced by the ABS are listed in the *Catalogue of Publications, Australia* (1101.0). The ABS also issues, on Tuesdays and Fridays, a *Publications Advice* (1105.0) which lists publications to be released in the next few days. The Catalogue and Publications Advice are available from any ABS office.

Symbols and other usages

- * subject to sampling variability too high for most practical uses. See paragraph 25 above.

28. Because estimates have been rounded, discrepancies may occur between sums of the component items and totals.

Electronic services

29. VIATEL. Key *656# for selected current economic, social and demographic statistics.

AUSSTATS. Thousands of up-to-date time series are available on this ABS on-line service through CSIRONET.

For further information phone the AUSSTATS Help Desk on (062) 52 6017.

TELESTATS. This service provides foreign trade statistics tailored to users' requirements.

Further information is available on (062) 52 5404.

IAN CASTLES
Australian Statistician

STANDARD ERRORS OF ESTIMATES

| <i>Size of estimate</i> | <i>Number</i> | <i>Relative standard error (per cent)</i> | <i>Size of estimate</i> | <i>Number</i> | <i>Relative standard error (per cent)</i> |
|-------------------------|---------------|---|-------------------------|---------------|---|
| 4,500 | 1,050 | 23.9 | 200,000 | 6,100 | 3.0 |
| 5,000 | 1,150 | 22.7 | 300,000 | 7,100 | 2.4 |
| 6,000 | 1,250 | 20.7 | 500,000 | 8,700 | 1.7 |
| 7,000 | 1,350 | 19.2 | 1,000,000 | 11,200 | 1.1 |
| 10,000 | 1,600 | 16.0 | 2,000,000 | 14,200 | 0.7 |
| 20,000 | 2,250 | 11.1 | 5,000,000 | 19,100 | 0.4 |
| 50,000 | 3,400 | 6.8 | 10,000,000 | 23,500 | 0.2 |
| 100,000 | 4,550 | 4.6 | | | |

TABLE 1. ALL PERSONS: LABOUR FORCE EXPERIENCE, FEBRUARY 1977 TO FEBRUARY 1987
(Per cent)

| | Survey conducted in February(a)— | | | | | | | | | |
|--|----------------------------------|--------------|--------------|--------------|--------------|--------------|--------------|--------------|--------------|--------------|
| | 1977 | 1979 | 1980 | 1981 | 1982 | 1983 | 1984 | 1985 | 1986 | 1987 |
| <i>Out of the labour force for the whole of the period</i> | 32.9 | 33.6 | 33.3 | 31.8 | 31.7 | 31.8 | 32.3 | 32.5 | 32.6 | 32.2 |
| <i>In the labour force at some time during the period</i> | 67.1 | 66.4 | 66.7 | 68.2 | 68.3 | 68.2 | 67.7 | 67.5 | 67.4 | 67.8 |
| Time in the labour force (weeks)— | | | | | | | | | | |
| 52 | 52.3 | 50.6 | 51.3 | 51.0 | 50.8 | 51.5 | 50.4 | 50.0 | 48.6 | 49.2 |
| 1 and under 52 | 14.7 | 15.8 | 15.4 | 17.3 | 17.5 | 16.7 | 17.3 | 17.5 | 18.8 | 18.6 |
| Worked at some time during the period | 65.4 | 63.7 | 64.1 | 65.4 | 65.4 | 64.1 | 62.5 | 63.0 | 63.1 | 63.4 |
| Full-time/part-time status of weeks worked— | | | | | | | | | | |
| All were full-time | 54.1 | 51.7 | 52.0 | 52.4 | 52.1 | 50.1 | 48.5 | 49.0 | 48.7 | 47.2 |
| More full-time than part-time | 1.3 | 2.2 | 2.0 | 2.2 | 2.3 | 2.6 | 2.3 | 2.3 | 2.4 | 3.1 |
| More part-time than full-time | 0.8 | 0.9 | 0.9 | 1.1 | 1.1 | 1.1 | 1.1 | 1.1 | 1.2 | 1.3 |
| All were part-time | 9.2 | 9.0 | 9.1 | 9.7 | 9.8 | 10.3 | 10.6 | 10.7 | 10.9 | 11.7 |
| Number of jobs held during the period(b)— | | | | | | | | | | |
| One | 54.1 | 53.3 | 54.0 | 54.7 | 54.2 | 54.6 | 53.9 | 53.3 | 52.5 | 52.4 |
| Two | 8.1 | 7.3 | 7.1 | 8.0 | 8.2 | 6.8 | 6.4 | 7.0 | 7.8 | 8.2 |
| Three | 1.8 | 1.7 | 1.7 | 1.7 | 1.6 | 1.5 | 1.3 | 1.5 | 1.7 | 1.6 |
| Four or more | 1.4 | 1.4 | 1.3 | 1.1 | 1.4 | 1.2 | 0.9 | 1.1 | 1.2 | 1.1 |
| Looked for work at some time during the period | 8.2 | 10.8 | 10.1 | 10.9 | 11.7 | 13.1 | 13.6 | 12.4 | 11.8 | 13.2 |
| Number of spells of looking for work— | | | | | | | | | | |
| One | 6.5 | 8.8 | 8.3 | 9.0 | 9.5 | 10.2 | 10.7 | 10.2 | 9.7 | 10.5 |
| Two | 0.9 | 1.2 | 1.0 | 1.3 | 1.4 | 1.9 | 1.7 | 1.2 | 1.1 | 1.2 |
| Three | 0.4 | 0.3 | 0.3 | 0.3 | 0.3 | 0.5 | 0.4 | 0.4 | 0.4 | 0.5 |
| Four or more | 0.4 | 0.4 | 0.4 | 0.3 | 0.5 | 0.5 | 0.7 | 0.6 | 0.6 | 0.8 |
| Total | 100.0 | 100.0 | 100.0 | 100.0 | 100.0 | 100.0 | 100.0 | 100.0 | 100.0 | 100.0 |

(a) See Explanatory Notes, paragraph 20, regarding comparability of the reference periods surveyed. (b) Excludes second jobs of multiple jobholders.

TABLE 2. ALL PERSONS: LABOUR FORCE EXPERIENCE DURING THE YEAR ENDING FEBRUARY 1987 AND MARITAL STATUS
(^{' 000})

| | Married | | | Not-married | | | Total | | |
|--|----------------|----------------|----------------|----------------|----------------|----------------|----------------|----------------|-----------------|
| | Males | Females | Persons | Males | Females | Persons | Males | Females | Persons |
| <i>Out of the labour force for the whole of the period</i> | 739.8 | 1,682.0 | 2,421.8 | 488.9 | 1,074.1 | 1,563.0 | 1,228.7 | 2,756.0 | 3,984.8 |
| <i>In the labour force at some time during the period</i> | 3,044.9 | 2,096.0 | 5,140.8 | 1,818.6 | 1,427.5 | 3,246.1 | 4,863.5 | 3,523.4 | 8,387.0 |
| Time in the labour force (weeks)(a)— | | | | | | | | | |
| 1 and under 4 | 7.1 | 61.0 | 68.1 | 49.8 | 50.8 | 100.5 | 56.8 | 111.8 | 168.7 |
| 4 and under 13 | 21.0 | 106.4 | 127.3 | 115.5 | 124.9 | 240.3 | 136.4 | 231.2 | 367.7 |
| 13 and under 26 | 23.3 | 124.2 | 147.5 | 60.2 | 82.6 | 142.8 | 83.4 | 206.8 | 290.2 |
| 26 and under 39 | 48.4 | 157.7 | 206.0 | 68.4 | 68.6 | 137.0 | 116.8 | 226.3 | 343.0 |
| 39 and under 49 | 143.9 | 251.5 | 395.4 | 119.3 | 118.4 | 237.7 | 263.2 | 370.0 | 633.1 |
| 49 and under 52 | 142.4 | 127.8 | 270.2 | 98.3 | 78.0 | 176.3 | 240.7 | 205.8 | 446.5 |
| 52 | 2,649.3 | 1,250.8 | 3,900.1 | 1,293.0 | 890.0 | 2,183.0 | 3,942.2 | 2,140.8 | 6,083.0 |
| Worked at some time during the period | 2,954.9 | 1,970.0 | 4,924.9 | 1,649.4 | 1,266.3 | 2,915.6 | 4,604.2 | 3,236.3 | 7,840.5 |
| Full-time/part-time status of weeks worked(b)— | | | | | | | | | |
| All were full-time | 2,711.9 | 950.2 | 3,662.2 | 1,335.8 | 838.9 | 2,174.7 | 4,047.7 | 1,789.2 | 5,836.9 |
| More full-time than part-time | 120.7 | 100.2 | 220.9 | 91.0 | 71.0 | 162.0 | 211.7 | 171.2 | 382.9 |
| More part-time than full-time | 19.6 | 59.3 | 79.0 | 37.4 | 40.2 | 77.6 | 57.0 | 99.5 | 156.5 |
| All were part-time | 101.3 | 856.6 | 957.9 | 182.6 | 313.2 | 495.7 | 283.9 | 1,169.7 | 1,453.6 |
| Time worked during the period(weeks)(c)— | | | | | | | | | |
| 1 and under 4 | 8.7 | 36.3 | 45.0 | 45.7 | 43.4 | 89.1 | 54.4 | 79.7 | 134.1 |
| 4 and under 13 | 31.1 | 95.2 | 126.3 | 105.0 | 100.4 | 205.4 | 136.1 | 195.6 | 331.7 |
| 13 and under 26 | 50.8 | 131.3 | 182.1 | 85.6 | 85.6 | 171.1 | 136.4 | 216.8 | 353.2 |
| 26 and under 39 | 97.5 | 161.9 | 259.5 | 124.0 | 96.6 | 220.6 | 221.5 | 258.6 | 480.1 |
| 39 and under 49 | 217.2 | 261.4 | 478.6 | 183.2 | 162.0 | 345.2 | 400.4 | 423.5 | 823.8 |
| 49 and under 52 | 149.2 | 120.4 | 269.5 | 90.8 | 73.8 | 164.6 | 240.0 | 194.1 | 434.1 |
| 52 | 2,396.0 | 1,155.3 | 3,551.2 | 1,007.2 | 697.4 | 1,704.7 | 3,403.2 | 1,852.7 | 5,255.9 |
| Looked for work at some time during the period | 345.3 | 309.4 | 654.7 | 530.7 | 443.6 | 974.3 | 876.0 | 752.9 | 1,629.0 |
| Number of spells of looking for work(d)— | | | | | | | | | |
| One | 273.6 | 247.2 | 520.8 | 418.8 | 362.1 | 780.9 | 692.4 | 609.3 | 1,301.7 |
| Two | 32.0 | 21.1 | 53.1 | 54.2 | 42.1 | 96.3 | 86.2 | 63.2 | 149.4 |
| Three | 14.3 | 11.9 | 26.2 | 23.6 | 13.3 | 37.0 | 37.9 | 25.2 | 63.1 |
| Four or more | 23.4 | 22.8 | 46.2 | 30.8 | 20.1 | 50.9 | 54.2 | 42.9 | 97.1 |
| Total | 3,784.7 | 3,777.9 | 7,562.6 | 2,307.6 | 2,501.6 | 4,809.1 | 6,092.3 | 6,279.5 | 12,371.7 |

(a) Excludes 54,800 persons whose time in the labour force could not be determined. (b) Excludes 10,600 persons whose full-time/part-time status could not be determined. (c) Excludes 27,600 persons whose time worked could not be determined. (d) Excludes 17,700 persons whose number of spells could not be determined.

TABLE 3. ALL PERSONS, FEBRUARY 1987: PROPORTION WHO PARTICIPATED IN THE LABOUR FORCE AT SOME TIME DURING THE YEAR ENDING FEBRUARY 1987(a), AGE AND MARITAL STATUS (Per cent)

| Age group | Married | | | Not-married | | | Total | | |
|--------------|-------------|-------------|-------------|-------------|-------------|-------------|-------------|-------------|-------------|
| | Males | Females | Persons | Males | Females | Persons | Males | Females | Persons |
| 15-19 | * | 75.5 | 79.2 | 71.8 | 71.8 | 71.8 | 71.9 | 72.0 | 71.9 |
| 20-24 | 99.7 | 75.6 | 83.4 | 95.3 | 90.5 | 93.3 | 96.1 | 85.0 | 90.6 |
| 25-34 | 98.4 | 68.0 | 82.2 | 95.9 | 83.6 | 90.7 | 97.5 | 71.9 | 84.7 |
| 35-44 | 97.5 | 72.4 | 85.2 | 89.7 | 73.4 | 81.4 | 96.3 | 72.6 | 84.6 |
| 45-54 | 93.1 | 60.8 | 77.6 | 85.3 | 65.3 | 74.6 | 91.9 | 61.7 | 77.1 |
| 55-59 | 85.0 | 34.9 | 61.0 | 74.8 | 42.6 | 56.4 | 83.2 | 36.7 | 60.1 |
| 60-64 | 53.4 | 16.4 | 36.4 | 46.3 | 19.3 | 28.8 | 52.1 | 17.4 | 34.5 |
| 65 and over | 12.4 | 3.6 | 8.5 | 9.0 | 3.5 | 4.8 | 11.5 | 3.5 | 6.9 |
| Total | 80.5 | 55.5 | 68.0 | 78.8 | 57.1 | 67.5 | 79.8 | 56.1 | 67.8 |

(a) Persons who participated in the labour force at some time during the year ending February 1987, as a proportion of the civilian population in each group.

TABLE 4. PERSONS IN THE LABOUR FORCE AT SOME TIME DURING THE YEAR ENDING FEBRUARY 1987: PROPORTION WHO LOOKED FOR WORK AT SOME TIME(a), AGE AND MARITAL STATUS (Per cent)

| Age group | Married | | | Not-married | | | Total | | |
|--------------|-------------|-------------|-------------|-------------|-------------|-------------|-------------|-------------|-------------|
| | Males | Females | Persons | Males | Females | Persons | Males | Females | Persons |
| 15-19 | * | 52.1 | 52.0 | 42.8 | 47.9 | 45.3 | 42.9 | 48.0 | 45.4 |
| 20-24 | 25.1 | 21.8 | 23.1 | 30.5 | 26.9 | 29.0 | 29.5 | 25.2 | 27.5 |
| 25-34 | 14.3 | 18.4 | 16.1 | 22.8 | 23.1 | 22.9 | 17.2 | 19.8 | 18.3 |
| 35-44 | 10.0 | 14.1 | 11.7 | 18.0 | 24.0 | 20.7 | 11.1 | 15.7 | 13.1 |
| 45-54 | 8.9 | 8.6 | 8.8 | 16.9 | 18.7 | 17.8 | 10.0 | 10.6 | 10.3 |
| 55-59 | 9.3 | 7.1 | 8.7 | 14.2 | 8.8 | 11.8 | 10.1 | 7.6 | 9.3 |
| 60 and over | 7.7 | 1.6 | 6.5 | 12.6 | 5.1 | 9.0 | 8.5 | 3.2 | 7.1 |
| Total | 11.3 | 14.8 | 12.7 | 29.2 | 31.1 | 30.0 | 18.0 | 21.4 | 19.4 |

(a) Persons who looked for work at some time during the year ending February 1987, as a proportion of persons who were in the labour force at some time for each group.

TABLE 5. PERSONS WHO WORKED AT SOME TIME DURING THE YEAR ENDING FEBRUARY 1987: NUMBER OF JOBS HELD DURING THE YEAR(a), AGE AND MARITAL STATUS ('000)

| Number of jobs held during the year | Age group | | | | | | Married | Not-married | Total |
|-------------------------------------|--------------|----------------|----------------|----------------|----------------|--------------|----------------|----------------|----------------|
| | 15-19 | 20-24 | 25-34 | 35-44 | 45-54 | 55 and over | | | |
| MALES | | | | | | | | | |
| One | 315.6 | 418.8 | 952.8 | 929.8 | 653.3 | 517.3 | 2,510.6 | 1,277.0 | 3,787.6 |
| Two | 66.4 | 120.4 | 205.4 | 132.2 | 58.2 | 26.6 | 347.7 | 261.6 | 609.4 |
| Three | 18.0 | 31.6 | 36.5 | 20.3 | 7.9 | * | 53.5 | 63.0 | 116.6 |
| Four or more | 10.2 | 24.6 | 32.7 | 12.2 | * | * | 41.0 | 43.5 | 84.5 |
| Total(b) | 411.9 | 596.4 | 1,228.6 | 1,094.9 | 724.3 | 548.2 | 2,954.9 | 1,649.4 | 4,604.2 |
| FEMALES | | | | | | | | | |
| One | 296.0 | 385.3 | 704.8 | 678.1 | 418.0 | 214.9 | 1,708.4 | 988.6 | 2,697.1 |
| Two | 70.8 | 94.1 | 123.7 | 78.1 | 28.3 | 8.1 | 200.7 | 202.4 | 403.1 |
| Three | 15.3 | 22.6 | 26.4 | 10.6 | 4.9 | * | 37.3 | 43.0 | 80.2 |
| Four or more | 7.1 | 14.1 | 13.7 | 8.5 | * | * | 18.8 | 28.2 | 47.0 |
| Total(b) | 391.4 | 517.2 | 871.9 | 775.9 | 454.4 | 225.5 | 1,970.0 | 1,266.2 | 3,236.3 |
| PERSONS | | | | | | | | | |
| One | 611.6 | 804.1 | 1,657.6 | 1,607.9 | 1,071.3 | 732.2 | 4,219.0 | 2,265.6 | 6,484.6 |
| Two | 137.3 | 214.5 | 329.1 | 210.3 | 86.5 | 34.7 | 548.4 | 464.0 | 1,012.4 |
| Three | 33.4 | 54.3 | 62.9 | 30.9 | 12.7 | * | 90.8 | 106.0 | 196.8 |
| Four or more | 17.3 | 38.7 | 46.3 | 20.8 | 6.1 | * | 59.8 | 71.8 | 131.6 |
| Total(b) | 803.3 | 1,113.6 | 2,100.5 | 1,870.7 | 1,178.7 | 773.6 | 4,924.9 | 2,915.6 | 7,840.5 |

(a) Excludes second jobs of multiple job holders. (b) Includes persons whose number of jobs held during the year could not be determined.

**TABLE 6. PERSONS WHO LOOKED FOR WORK AT SOME TIME DURING THE YEAR ENDING FEBRUARY 1987:
NUMBER OF SPELLS OF LOOKING FOR WORK, TIME SPENT LOOKING FOR WORK DURING THE YEAR AND AGE**

| | Age group | | | | | | Total |
|-----------------------|--------------|--------------|--------------|--------------|--------------|-------------|----------------|
| | 15-19 | 20-24 | 25-34 | 35-44 | 45-54 | 55 and over | |
| | —' 000— | | | | | | |
| One spell— | | | | | | | |
| Males | 174.9 | 141.8 | 170.4 | 101.2 | 59.1 | 45.0 | 692.4 |
| Females | 197.2 | 117.2 | 143.2 | 102.5 | 39.3 | 9.9 | 609.3 |
| Persons | 372.1 | 259.0 | 313.6 | 203.7 | 98.5 | 54.9 | 1,301.7 |
| | —weeks— | | | | | | |
| Average duration(a) | 15.7 | 19.8 | 19.3 | 19.5 | 25.5 | 32.2 | 19.4 |
| Median duration(a) | 8 | 12 | 12 | 12 | 21 | 40 | 11 |
| | —' 000— | | | | | | |
| Two spells— | | | | | | | |
| Males | 20.5 | 23.9 | 22.4 | 9.4 | 6.1 | * | 86.2 |
| Females | 20.3 | 12.0 | 16.0 | 10.5 | * | * | 63.2 |
| Persons | 40.8 | 35.9 | 38.4 | 19.9 | 10.2 | * | 149.4 |
| | —weeks— | | | | | | |
| Average duration(a) | 18.4 | 19.9 | 17.1 | 18.6 | 18.5 | * | 18.5 |
| Median duration(a) | 16 | 16 | 13 | 13 | 14 | * | 14 |
| | —' 000— | | | | | | |
| Three or more spells— | | | | | | | |
| Males | 16.8 | 20.9 | 25.9 | 14.0 | 9.4 | 5.2 | 92.2 |
| Females | 12.4 | 9.5 | 22.8 | 13.5 | 7.0 | * | 68.0 |
| Persons | 29.2 | 30.5 | 48.7 | 27.5 | 16.4 | 8.0 | 160.2 |
| | —weeks— | | | | | | |
| Average duration(a) | 16.7 | 18.7 | 16.4 | 14.3 | 16.7 | 15.8 | 16.5 |
| Median duration(a) | 12 | 16 | 12 | 12 | 14 | 12 | 13 |
| | —' 000— | | | | | | |
| Total(b)— | | | | | | | |
| Males | 214.2 | 187.7 | 219.5 | 125.5 | 75.2 | 54.0 | 876.0 |
| Females | 231.7 | 139.8 | 186.4 | 130.4 | 51.2 | 13.3 | 752.9 |
| Persons | 446.0 | 327.5 | 405.9 | 255.9 | 126.4 | 67.3 | 1,629.0 |
| | —weeks— | | | | | | |
| Average duration(a) | 16.0 | 19.7 | 18.8 | 18.8 | 23.8 | 29.5 | 19.0 |
| Median duration(a) | 9 | 13 | 12 | 12 | 20 | 33 | 12 |

(a) Of total weeks spent looking for work during the year. (b) Includes 17,700 persons whose number of spells of looking for work could not be determined.

TABLE 7. PERSONS OUT OF THE LABOUR FORCE AT SOME TIME DURING THE YEAR ENDING FEBRUARY 1987: TIME OUT OF THE LABOUR FORCE (' 000)

| | Time out of the labour force (weeks) | | | | | | | Total(a) |
|----------------|--------------------------------------|----------------|-----------------|-----------------|-----------------|-----------------|----------------|----------------|
| | 1 and under 4 | 4 and under 13 | 13 and under 26 | 26 and under 39 | 39 and under 49 | 49 and under 52 | 52 | |
| Males | 240.7 | 244.9 | 111.7 | 96.2 | 147.0 | 56.8 | 1,228.7 | 2,150.0 |
| Married | 142.4 | 134.5 | 48.3 | 30.8 | 23.0 | 7.1 | 739.8 | 1,135.4 |
| Not-married | 98.3 | 110.4 | 63.4 | 65.5 | 124.0 | 49.8 | 488.9 | 1,014.6 |
| Females | 205.8 | 346.2 | 207.4 | 222.6 | 258.0 | 111.8 | 2,756.0 | 4,138.7 |
| Married | 127.8 | 235.2 | 145.2 | 138.3 | 121.1 | 61.0 | 1,682.0 | 2,527.1 |
| Not-married | 78.0 | 111.0 | 62.3 | 84.3 | 137.0 | 50.8 | 1,074.1 | 1,611.5 |
| Persons | 446.5 | 591.1 | 319.1 | 318.8 | 405.0 | 168.7 | 3,984.8 | 6,288.7 |
| Age group— | | | | | | | | |
| 15-19 | 46.0 | 66.9 | 56.7 | 81.0 | 187.8 | 73.9 | 383.1 | 908.0 |
| 20-24 | 76.1 | 85.4 | 44.9 | 43.1 | 50.7 | 16.2 | 123.7 | 447.0 |
| 25-34 | 139.2 | 158.3 | 88.7 | 86.2 | 73.7 | 33.2 | 399.3 | 991.3 |
| 35-44 | 102.3 | 145.0 | 62.4 | 46.4 | 45.2 | 24.6 | 356.8 | 792.2 |
| 45-54 | 51.9 | 75.8 | 27.8 | 30.2 | 23.7 | 11.5 | 365.7 | 592.3 |
| 55-59 | 17.3 | 27.4 | 16.4 | 11.9 | 7.8 | 5.1 | 295.8 | 384.4 |
| 60-64 | 8.4 | 18.8 | 15.5 | 10.5 | 9.8 | * | 470.9 | 537.2 |
| 65 and over | 5.2 | 13.4 | 6.9 | 9.5 | 6.2 | * | 1,589.4 | 1,636.3 |

(a) Includes 54,800 persons whose time out of the labour force could not be determined.

